

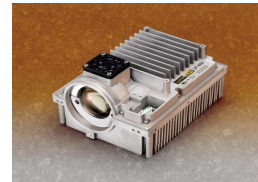
LiFi PRJ 30 Series

Optimized lighting solution for projection display applications



- Up to 4700 lumens
- Collimated or focused beam options
- Useful lifetime more than 3x longer than conventional lamps
- Ultra high reliability
- Forward Directional Output
- Continuous spectrum, up to 95 CRI
- Turn-on rate, 10x faster than standard high intensity lamps
- Dynamic brightness modulation with digital communication

Ideal for projection display, digital signage and fiber optic lighting

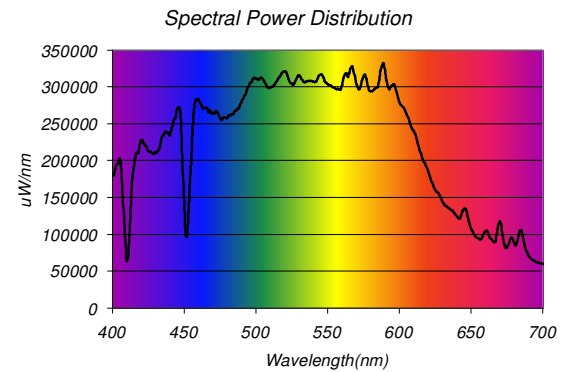


LiFi PRJ 30-01

Product Data



Ordering Code	Lifi PRJ-30-01
Length (cm)	103
Width (cm)	103
Height (cm)	67
Enclosure Finish	Natural aluminum
Rated Life (hours)	5000
Beam Profile	Focused
F-Number	1.0
Lumens(1)	4700
Start time (sec.)	10
Restrike time (sec.)	30
Lumen Maintenance at Life%	50
CCT (Kelvin)	6200
CIE x, CIE y	0.318, 0.342
Color Rendering Index	95
Dimming Range (%)	20-100
Nominal Power Use (w)	230
Input Voltage	28
Input Current (A)	8.2



Operation Instructions:

Product is designed for use with forced air cooling

